

JALAS® 8202 FX2 SUPREME

Insole, textile, soft E.V.A, polyester based electro conductive thread, Merino wool, double shock absorption zones in Poron® XRD®, black, grey

PROPERTIES

Extra comfortable, breathable, excellent shock absorption

SPECIFICATION

TYPE OF ACCESSORY Insoles

SIZE RANGE (EU) 35, 36, 37, 38, 39, 40, 41, 42, 43, 44, 45, 46, 47, 48, 49, 50

MATERIAL Textile, soft E.V.A, polyester based electro conductive thread, Merino wool, double shock absorption zones in Poron® XRD®

COLOUR Black, Grey

FEATURES

ESD, ergonomically shaped, soft, perforated front section, double shock absorption zones, moisture-wicking, approved for use in all JALAS® protective shoes

PREVENTS RISK OF

Antistatic



1(2)

Ergothen Shock Absorption System

Anti-static properties

ESD

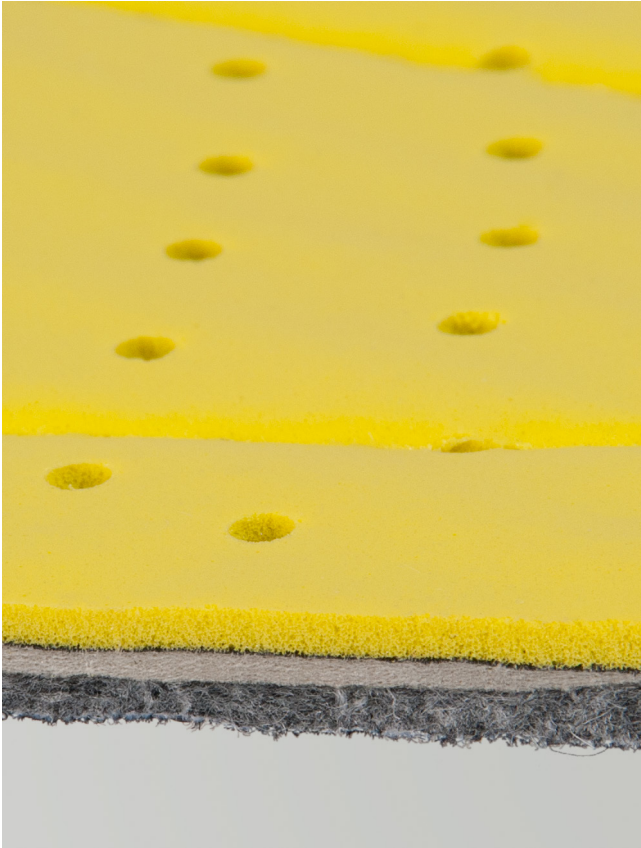
SIZE	ART. NO.	EAN NO.	SIZE	ART. NO.	EAN NO.
35	8202-35	6408487427428	44	8202-44	6408487427510
36	8202-36	6408487427435	45	8202-45	6408487427527
37	8202-37	6408487427442	46	8202-46	6408487427534
38	8202-38	6408487427459	47	8202-47	6408487427541
39	8202-39	6408487427466	48	8202-48	6408487427558
40	8202-40	6408487427473	49	8202-49	6408487427565
41	8202-41	6408487427480	50	8202-50	6408487427572
42	8202-42	6408487427497			
43	8202-43	6408487427503			

All values for the specified product are indicated without tolerances and may vary to actual value for individual products. We reserve the right to modify or update the information in this document without prior notice.

JALAS® 8202 FX2 SUPREME

COMPLIANCE DESCRIPTION

ESD: Electro Static Discharge



 Ergothon Shock Absorption System

 Anti-static properties

 ESD

All values for the specified product are indicated without tolerances and may vary to actual value for individual products. We reserve the right to modify or update the information in this document without prior notice.

2021-02-22

2(2)

ejendals
PROTECTING HANDS AND FEET

EJENDALS AB

Box 7, SE-793 21 Leksand, Sweden

Phone +46 (0) 247 360 00

Fax +46 (0) 247 360 10

info@ejendals.com

order@ejendals.com

www.ejendals.com