

OUR KNOWLEDGE, YOUR SAFETY

Ejendals has a long history of reducing the risk of preventable injuries to hands and feet. We've been doing it for 70 years. We constantly develop safety shoes and gloves, with innovative and unique features to ensure working men and women stay comfortable and safe. Proper safety equipment is paramount to avoid damage to equipment when handling electronics.



HANDLING STATIC ELECTRICITY SAFELY

TEGERA® PRESENTS ONE OF THE
MARKETS WIDEST RANGES OF ESD
AND ATEX PROTECTIVE GLOVES.



RENOWNED TEGERA® PREMIUM FEATURES

Many of the TEGERA® gloves have these premium quality features:

- High dexterity and comfort
- Fingertip sensitivity
- High breathability
- OEKO-TEX and Dermatest approved
- Cut protection using TEGERA® CRF® Technology
- Touch screen functionality



Watch our video on how
ESD and ATEX testing
is performed



ejendals
PROTECTING HANDS AND FEET

www.ejendals.com

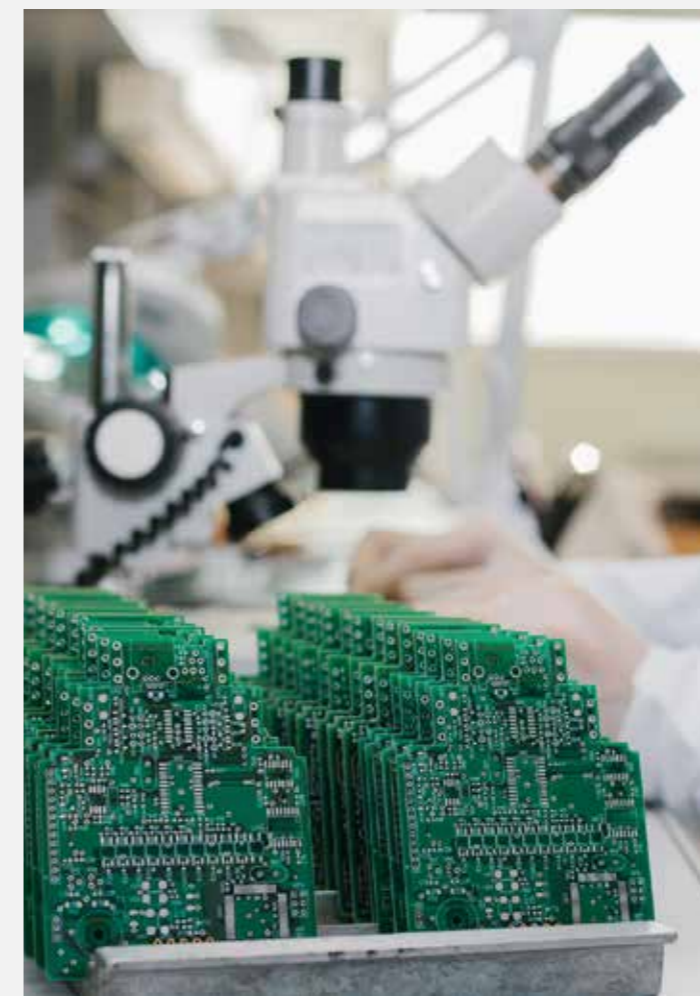
TEGERA®



Safety is crucial. The ability to move smoothly with comfortable and fresh hands is also vital for efficiency and comfort at work. The demand for high-quality ESD and ATEX gloves that have special functions such as cut protection and touch screen functionality is increasing. TEGERA's extensive innovation experience and knowledge have resulted in one of the widest ranges of ESD and ATEX gloves.

THE IMPORTANCE OF DISSIPATION

In industries where static electricity is a problem, gloves with conductive properties are important. These gloves are dissipative, which means they allow electric charges to flow in a controlled way. It is not possible to completely prevent the build up of static electricity, but it can be reduced.



WORKING SMOOTHLY IS A NECESSARY SAFETY FACTOR

Many of our gloves are made of thin, breathable and flexible material with high dexterity and fingertip sensitivity - to enable smooth and safe work. Several models are also equipped with level B or C cut protection for easy handling of sharp objects - and touchscreen functionality for unobstructed handling of displays.



ATEX – FOR PROTECTING PEOPLE

ATEX gloves are required in work environments classified as explosive, to prevent electrostatic charges to ignite explosive material – which in turn can be dangerous to humans. An explosion can be ignited by low voltage.



ESD – FOR PROTECTING EQUIPMENT

ESD gloves are essential in many industries – and working situations for preventing damages to sensitive electronic components. It is also important to wear ESD approved socks, shoes and other work wear. Electronics can be damaged by a discharge of very low voltage.

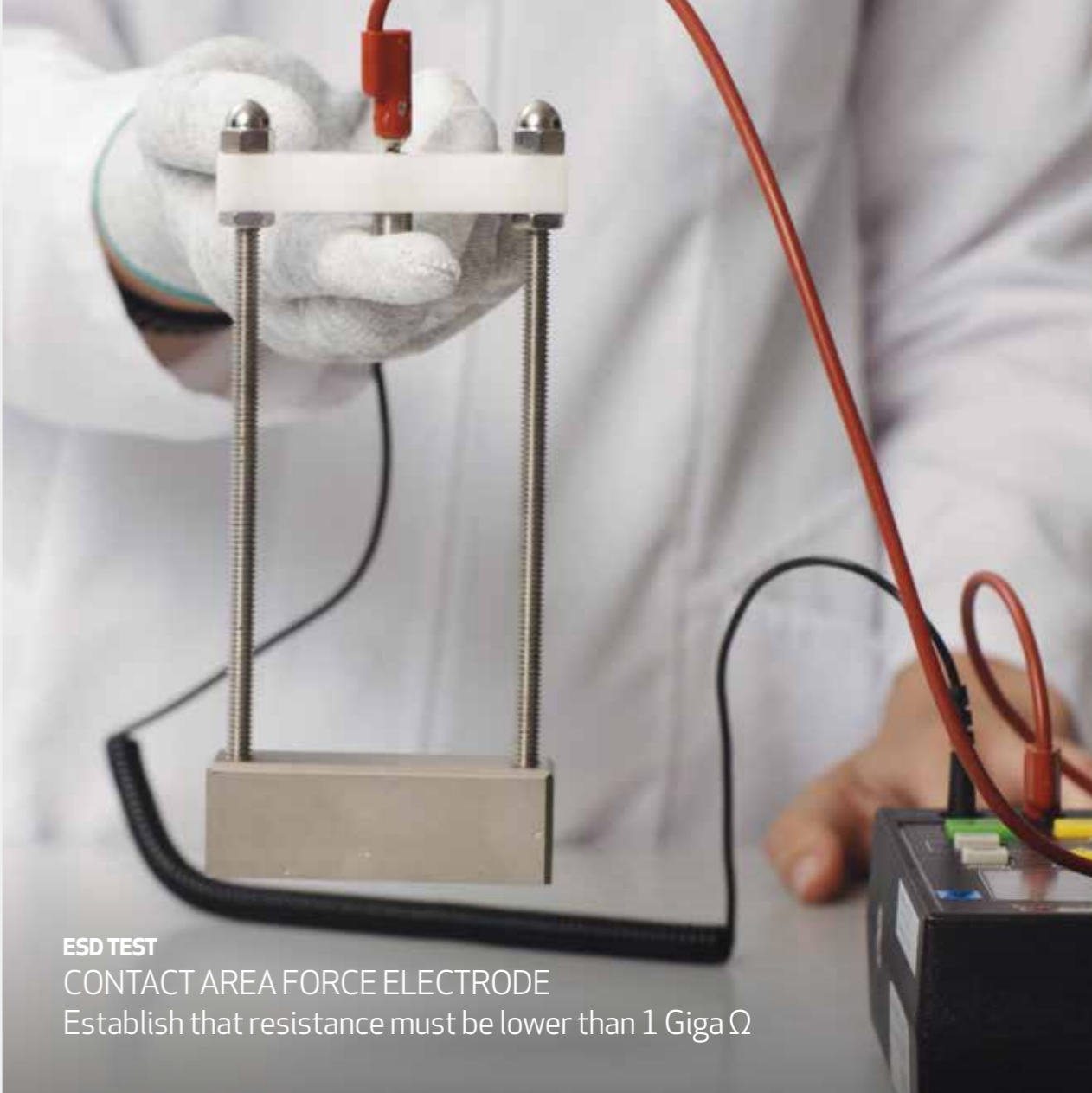


TESTING AND CERTIFICATION OF ESD AND ATEX GLOVES

Gloves must meet strict requirements regarding their ability to dissipate static electricity when used in ESD protected areas (EPA) or ATEX protected environments.

International certifications denotes the requirements. Ejendals perform these tests in-house in addition to the official tests performed by notified bodies.

Testing by notified body is required for certification.



ESD TEST
CONTACT AREA FORCE ELECTRODE
Establish that resistance must be lower than 1 Giga Ω



ATEX TEST
VERTICAL RESISTANCE TEST
Confirm the resistance must be lower than 100 Mega Ω



ESD TEST
ELECTROSTATIC POTENTIAL
Ensure that the glove does not accumulate more than 100 volts

SELECTION GUIDE



ESD GLOVES

CUT PROTECTION ESD GLOVES

NEW TEGERA® 803

- Cut B protection
- CRF Technology
- PU palm-dipped 18gg fibre
- Sizes: 6-12



| Cut Protection | Fingertip sensitivity | Touch screen Functionality | Liner, No dipping |
|----------------|-----------------------|----------------------------|-------------------|
| CUT B | ●●○○ | ● | ○ |



NEW TEGERA® 806

- Liner
- Cut C protection
- CRF Technology
- 18gg fibre
- Sizes: 6-12



| Cut Protection | Fingertip sensitivity | Touch screen Functionality | Liner, No dipping |
|----------------|-----------------------|----------------------------|-------------------|
| CUT C | ●●○○ | ○ | ● |



DISPOSABLE ESD GLOVES

TEGERA® 825A

- PVC
- 0,1 mm
- Sizes: 7-11



| Cut Protection | Fingertip sensitivity | Touch screen Functionality | Liner, No dipping |
|----------------|-----------------------|----------------------------|-------------------|
| ○ | ●●●● | ○ | ● |



TEGERA® 819A

- PVC
- 0,08 mm
- Sizes: 7-11



| Cut Protection | Fingertip sensitivity | Touch screen Functionality | Liner, No dipping |
|----------------|-----------------------|----------------------------|-------------------|
| ○ | ●●●● | ○ | ● |



ATEX GLOVES

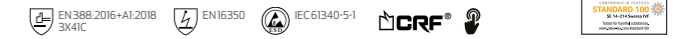
CUT PROTECTION ATEX GLOVES

TEGERA® 804

- Cut C protection
- CRF Technology
- Nitril ¾-dipped
- 18gg fibre
- Oil and liquid protection
- Sizes: 6-11



| Cut Protection | Fingertip sensitivity | Touch screen Functionality | Liner, No dipping |
|----------------|-----------------------|----------------------------|-------------------|
| CUT C | ●○○○ | ● | ○ |



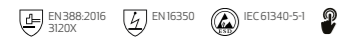
SUPERTHIN AND FLEXIBLE ESD GLOVES

NEW TEGERA® 877

- Super-thin
- PU palm dipped
- 18gg fibre
- Sizes: 5-12



| Cut Protection | Fingertip sensitivity | Touch screen Functionality | Liner, No dipping |
|----------------|-----------------------|----------------------------|-------------------|
| ○ | ●●●○ | ● | ○ |

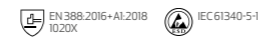


NEW TEGERA® 878

- Super-thin
- PU palm dipped
- 18gg fibre
- Sizes: 5-12



| Cut Protection | Fingertip sensitivity | Touch screen Functionality | Liner, No dipping |
|----------------|-----------------------|----------------------------|-------------------|
| ○ | ●●●○ | ○ | ○ |



EXTRA SOFT AND FLEXIBLE ESD GLOVES

TEGERA® 805

- Liner
- 15gg fibre
- Sizes: 6-11



| Cut Protection | Fingertip sensitivity | Touch screen Functionality | Liner, No dipping |
|----------------|-----------------------|----------------------------|-------------------|
| ○ | ●●●○ | ○ | ● |



TEGERA® 810

- PU finger-dipped
- 15gg fibre
- Sizes: 5-11



| Cut Protection | Fingertip sensitivity | Touch screen Functionality | Liner, No dipping |
|----------------|-----------------------|----------------------------|-------------------|
| ○ | ●●●○ | ○ | ○ |



TEGERA® 811

- PU Palm-dipped
- 15gg fibre
- Sizes: 6-10



| Cut Protection | Fingertip sensitivity | Touch screen Functionality | Liner, No dipping |
|----------------|-----------------------|----------------------------|-------------------|
| ○ | ●●●○ | ○ | ○ |



VERY THIN AND FLEXIBLE ESD GLOVE WITH NITRILE

NEW TEGERA® 879

- Very thin
- Nitrile palm dipped
- 18gg fibre
- Sizes: 6-12



| Cut Protection | Fingertip sensitivity | Touch screen Functionality | Liner, No dipping |
|----------------|-----------------------|----------------------------|-------------------|
| ○ | ●●○○ | ● | ○ |



GENERIC ESD GLOVES

NEW TEGERA® 800

- Liner
- 13gg fibre
- Sizes: 5-12



| Cut Protection | Fingertip sensitivity | Touch screen Functionality | Liner, No dipping |
|----------------|-----------------------|----------------------------|-------------------|
| ○ | ●●○○ | ○ | ● |



NEW TEGERA® 801

- PU finger tip dipped
- 13gg fibre
- Sizes: 5-12



| Cut Protection | Fingertip sensitivity | Touch screen Functionality | Liner, No dipping |
|----------------|-----------------------|----------------------------|-------------------|
| ○ | ●●○○ | ○ | ○ |

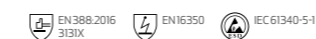


NEW TEGERA® 802

- PU palm dipped
- 13gg fibre
- Sizes: 5-12



| Cut Protection | Fingertip sensitivity | Touch screen Functionality | Liner, No dipping |
|----------------|-----------------------|----------------------------|-------------------|
| ○ | ●●○○ | ○ | ○ |



ESD SOCKS

JALAS® 8201

- Thin Modal material
- Sizes: 36-38 - 46-47



Most JALAS® safety and occupational shoes are ESD certified